

**A**  
**ANTIGUA**  
APPAREL  
Arrive Comfortably



**THE ESSENTIALS COLLECTION**









***elevated.***

**THE ESSENTIALS COLLECTION**

***We are proud to present Antigua Apparel's  
2024 Essentials Collection. The pages that  
follow contain new and classic styles that  
speak to fashion trend and refined fabrication.***

***Our Essentials are always in-stock and  
available, both decorated or blank.***

***This is Antigua Apparel.  
Arrive Comfortably.***





# *men's*

|                         |     |
|-------------------------|-----|
| POLOS.....              | 7   |
| ZIPPERED PULLOVERS..... | 23  |
| VESTS .....             | 37  |
| JACKETS .....           | 41  |
| WINDWEAR .....          | 47  |
| WOVENS.....             | 51  |
| FLEECE.....             | 55  |
| BOTTOMS .....           | 61  |
| BIG AND TALL .....      | 64  |
| MATCHABLES .....        | 114 |



# women's

|                         |     |
|-------------------------|-----|
| POLOS.....              | 73  |
| ZIPPERED PULLOVERS..... | 83  |
| VESTS .....             | 91  |
| JACKETS .....           | 95  |
| FLEECE.....             | 101 |
| BOTTOMS .....           | 109 |
| MATCHABLES .....        | 114 |





A scenic desert landscape featuring a lush green golf course in the middle ground, surrounded by various cacti and shrubs. In the background, rugged, dark mountains rise against a clear blue sky. In the foreground, a well-appointed outdoor patio is visible, with several pieces of furniture including a large tan sofa, a wicker chair, and a stone fire pit. The overall atmosphere is serene and inviting.

*Men's*













# *polos*

THE MEN'S COLLECTION



# LEGACY PIQUE POLO

104271

One of our core polos. Made with solid pique fabric in 100% poly. It delivers comfort, moisture-wicking and an overall sophisticated look.

- 100% Polyester Pique Knit (170gsm)
- Flat Knit collar
- Cut and sew sleeve cuffs
- 3-button placket
- Antigua 'A' on right sleeve

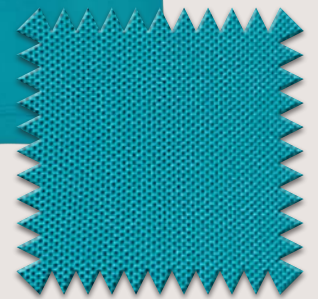
**S-3XL**

## Colors available in S-5XL:

- 001 White
- 005 Navy
- 010 Black
- 011 Grey Heather
- 017 Carbon
- 022 Dark Red
- 043 Cardinal Red
- 056 Dark Royal



002  
Reef



**Blank Price:**

\$31.50

**Price Embroidered with Logo:**

\$38.50





# TRIBUTE POLO

104197

One of our classic polos. Made with 100% poly jersey fabric, it has a comfortable fit that looks great on and off the course.

- 100% polyester interlock knit (175gsm)
- Self-fabric collar
- Open cuff
- 3-button placket
- Antigua 'A' on right sleeve

**S-3XL**

**Colors available in S-4XL:**

- 009 Dark Purple
- 043 Cardinal Red
- 069 Cabernet
- 344 Columbia Blue

**Colors available in S-5XL:**

- 001 White
- 005 Navy
- 010 Black
- 022 Dark Red
- 056 Dark Royal
- 076 Smoke



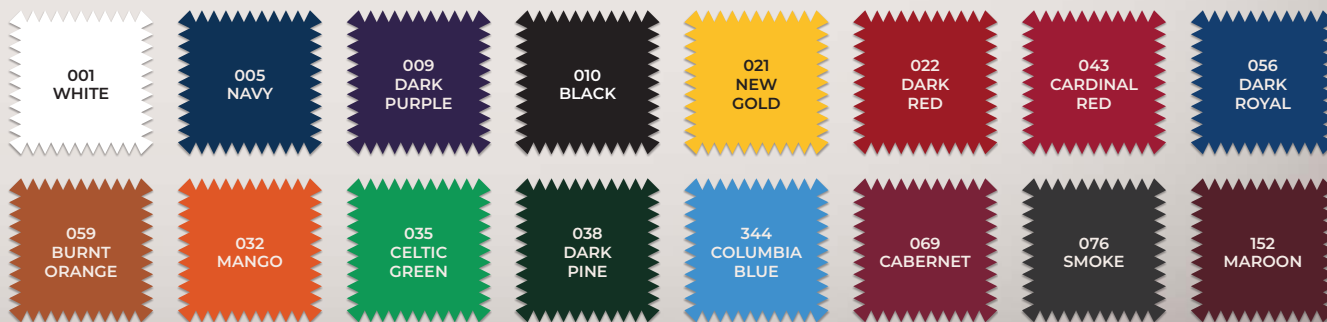
032  
Mango

**Blank Price:**

**\$34.50**

**Price Embroidered with Logo:**

**\$41.50**





# REPROCESS POLO

105588

New to our line is our sustainable polyester — made from recycled plastic materials. The hand on this style is ultra soft and it provides moisture-wicking and spandex for four-way stretch and extra comfort.

- 90% recycled polyester/ 10% spandex (180gsm)
- Self-fabric collar
- Side vents
- 3-button placket
- Antigua 'A' on right sleeve

S-3XL



Blank Price:  
\$36.00

005  
Navy

Price Embroidered with Logo:  
\$43.00





# PAR 3 POLO

104829

Enjoy and relax in comfort with our signature, super-soft brushed heathered polo. The fabric is made with a poly stretch blend which allows you to move with ease no matter when and how you wear it.

- 88% polyester/  
12% spandex brushed heather jersey fabric (186gsm)
- Self-collar band
- Side vents
- Matte logo buttons
- Antigua 'A' on right sleeve

**S-3XL**



055  
Dark Red Heather

**Blank Price:**

**\$39.50**

**Price Embroidered with Logo:**

**\$46.50**





# ERA POLO (SOLID)

105615

This polo features an elevated, super-soft brushed heathered fabric. It offers a modern aesthetic along with moisture-wicking and four-way stretch for ultra comfort.

- 88% polyester/  
12% spandex brushed jersey fabric (185gsm)
- Self-collar band
- Side vents
- Matte logo buttons
- Antigua 'A' on right sleeve

**S-3XL**



038  
Dark Pine





# ERA POLO (COLOR PLACKET)

105615

This polo is also made with our elevated, super-soft brushed heathered fabric. However, this style adds a design twist — a pop of color in the placket and inside back neck.

- 88% polyester/  
12% spandex brushed jersey fabric (185gsm)
- Contrast placket and half-moon
- Side vents
- Matte logo buttons
- Antigua 'A' on right sleeve

**S-3XL**



874  
Navy / Dark Red

Blank Price:  
\$39.50

Price Embroidered with Logo:  
\$46.50





# LAYOUT POLO

105131

This poly matte heather polo is perfect for just about any occasion. You can tee-it-up in it, or just hang with friends at the 19th hole.

- 93% polyester/  
7% spandex (180gsm)
- Signature heathered  
matte poly fabrication
- Side vents
- Matte logo buttons
- Antigua 'A' on right  
sleeve

S-3XL



Blank Price:

\$41.00

171  
Skyscraper Hea ther

Price Embroidered with Logo:

\$48.00





# TUNNEL POLO

105281

This is not your everyday striped polo. The tonal shadow stripe creates a textural look with its high low stripe pattern detail.

- 92% polyester/  
8% spandex tonal stripe  
(180gsm)
- Self-fabric collar
- Matte logo buttons
- Side vents
- Antigua 'A' on right  
sleeve

S-3XL



Blank Price:

\$39.00

658  
Navy Multi

Price Embroidered with Logo:

\$46.00





# SCHEME POLO

105135

This classic two-color heathered stripe is perfect from course to dinner.

- 93% polyester/  
7% spandex (165gsm)
- Mini stripe
- Side vents
- Matte logo buttons
- Antigua 'A' on right sleeve

S-3XL



Blank Price:

\$40.00

041  
Navy Heather

Price Embroidered with Logo:

\$47.00





# SKILLS POLO

104910

Our take on the classic striped polo offers a monotone, triple stripe pattern accented by a white stripe.

- 94% polyester/  
6% spandex (190gsm)
- Poly sheen jersey fabric
- Sublimated stripe print
- Matte logo buttons
- Antigua 'A' on right sleeve

S-3XL



Blank Price:  
\$40.00

Price Embroidered with Logo:  
\$47.00

794  
Dark Red / White Multi



721  
CARDINAL RED  
/ WHITE MULTI



794  
DARK RED  
/ WHITE MULTI



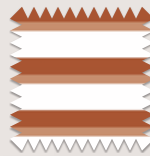
928  
CABERNET  
/ WHITE MULTI



64R  
MAROON  
/ WHITE MULTI



897  
MANGO  
/ WHITE MULTI



76R  
BURNT ORANGE  
/ WHITE MULTI



14Y  
CELTIC GREEN  
/ WHITE MULTI



895  
DARK PINE  
/ WHITE MULTI



65R  
COLUMBIA BLUE  
/ WHITE MULTI



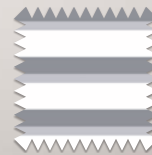
927  
DARK ROYAL  
/ WHITE MULTI



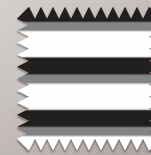
800  
NAVY  
/ WHITE MULTI



900  
DARK PURPLE  
/ WHITE MULTI



75X  
SKYSCRAPER  
/ WHITE MULTI



942  
BLACK  
/ WHITE MULTI



# TWINE POLO

105613

We are going "mini" with this polo. Not in size, but with a classic traditional micro-stripe pattern.

- 92% polyester/8% spandex (170gsm)
- Mini stripe
- Side vents
- Matte logo buttons
- Antigua 'A' on right sleeve

S-3XL

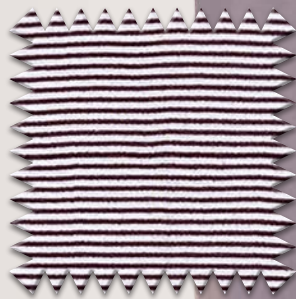
Blank Price:

\$42.00

Price Embroidered

with Logo:

\$49.00



156  
Maroon / White



699  
CARDINAL RED  
/ WHITE



352  
DARK RED  
/ WHITE



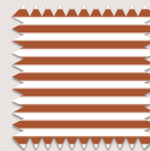
436  
CABERNET  
/ WHITE



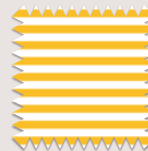
156  
MAROON  
/ WHITE



447  
MANGO  
/ WHITE



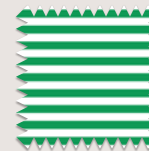
82C  
BURNT ORANGE  
/ WHITE



809  
GOLD  
/ WHITE



501  
TENNESSEE ORANGE  
/ WHITE



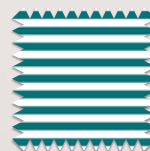
263  
CELTIC GREEN  
/ WHITE



417  
DARK PINE  
/ WHITE



248  
REEF  
/ WHITE



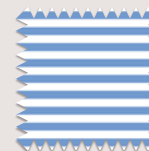
341  
TEAL  
/ WHITE



340  
DEEP TEAL  
/ WHITE



317  
SURF  
/ WHITE



390  
COLUMBIA BLUE  
/ WHITE



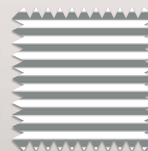
347  
DARK ROYAL  
/ WHITE



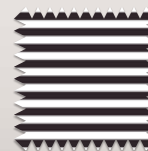
181  
NAVY  
/ WHITE



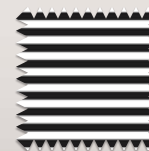
481  
DARK PURPLE  
/ WHITE



76X  
SKYSCRAPER  
/ WHITE



338  
BROWN  
/ WHITE



185  
BLACK  
/ WHITE



# RINGS POLO

105698

All over prints are a must-have in everybody's wardrobe. This polo features an eye-catching, yet subtle geometric print. The poly-span fabric also provides moisture-wicking and four-way stretch.

- 94% polyester/  
6% spandex (180gsm)
- Poly sheen jersey fabric
- Sublimated rings print
- Matte logo buttons
- Antigua 'A' on right sleeve

**S-3XL**



324  
White / Dark Red

**Blank Price:**

**\$44.00**

**Price Embroidered with Logo:**

**\$51.00**



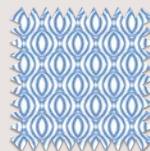
324  
WHITE /  
DARK RED



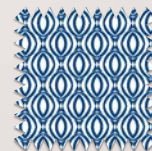
227  
WHITE /  
MANGO



321  
WHITE /  
DARK PINE



849  
WHITE /  
COLUMBIA BLUE



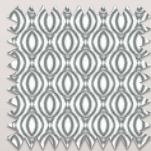
326  
WHITE /  
DARK ROYAL



223  
WHITE /  
NAVY



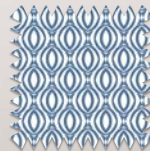
325  
WHITE /  
DARK PURPLE



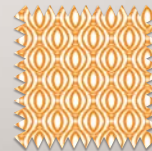
31W  
WHITE /  
SKYSCRAPER



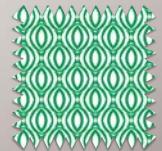
222  
WHITE /  
BLACK



A46  
WHITE /  
QUIET HARBOR



329  
WHITE /  
TENNESSEE ORANGE



A42  
WHITE /  
CELTIC GREEN



# ELLIPSE POLO

105638

We made this geometric print tonal to provide a subtle yet upscale all-over print. You will look sharp whether on the course or out on the town.

- 94% polyester/  
6% spandex (180gsm)
- Poly sheen jersey fabric
- Sublimated ellipse print
- Matte logo buttons
- Antigua 'A' on right sleeve

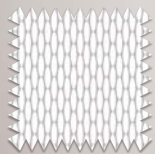
S-3XL



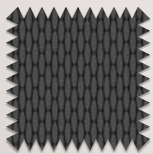
Blank Price:  
\$44.00

660  
Dark Royal Multi

Price Embroidered with Logo:  
\$51.00



230  
WHITE MULTI



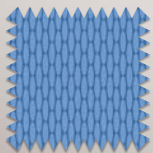
891  
CARBON MULTI



658  
NAVY MULTI



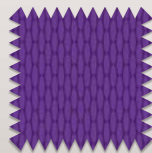
660  
DARK ROYAL MULTI



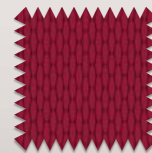
993  
COLUMBIA BLUE MULTI



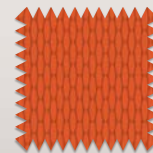
634  
DARK PINE MULTI



986  
DARK PURPLE MULTI



662  
DARK RED MULTI



987  
MANGO MULTI



# WESTERN POLO

105707

A tip of the hat to your inner cowboy, this polo features a traditional western yoke on the front and back along with pearl snaps. A modern polo you can wear anywhere.

- 88% polyester/  
12% spandex brushed jersey fabric (185gsm)
- Pointed western front and back yoke
- Side vents
- Pearl snaps
- Antigua 'A' on right sleeve

**S-3XL**



005  
Navy

*Blank Price:*

\$44.00

*Price Embroidered with Logo:*

\$51.00









A close-up photograph of a dark blue zippered pullover. The image focuses on the central zipper and a pocket zipper. The fabric has a fine ribbed texture. In the bottom right corner, a white logo resembling a stylized letter 'A' is visible on the sleeve. The lighting is dramatic, highlighting the texture and the metallic sheen of the zipper teeth.

# *zippered pullovers*

THE MEN'S COLLECTION



# TRIBUTE 1/4 ZIP PULLOVER

104644

This classic 1/4 zip pullover is a perfect layering piece for all activities. Made from 100% poly jersey, it delivers moisture-wicking, comfort and easy-care.

- 100% polyester interlock knit (175gsm)
- Self-fabric collar
- Open cuff and hem
- Antigua 'A' on right cuff

S-3XL



Blank Price:

\$41.00

035  
Celtic Green

Price Embroidered with Logo:

\$48.00





# REPROCESS 1/4 ZIP PULLOVER

105587

This pullover is part of our sustainable collection. Made from recycled plastic materials, this fabric blends recycled polyester and spandex. The hand on this piece is incredibly soft and provides moisture-wicking and four-way stretch for extra comfort.

- 90% recycled polyester/10% spandex (180gsm)
- Self-fabric collar
- Covered coil zipper with dull matte black nickel zipper pull
- Antigua 'A' on right cuff

**S-3XL**



87H  
Skyscraper

**Blank Price:**

\$42.00

**Price Embroidered with Logo:**

\$49.00





# HUNK 1/4 ZIP PULLOVER

104958

Made with our signature, super-soft brushed heathered fabric, this pullover is extremely comfortable. The fabric provides a refined look, yet is made with a poly stretch, so it won't slow you down in any activity.

- 88% polyester/ 12% spandex brushed heather jersey fabric (186gsm)
- Self-collar band
- Covered coil zipper with dark antique nickel zipper pull
- Antigua 'A' on right cuff

**S-3XL**



69M  
Celtic Green Heather

**Blank Price:**

**\$44.00**

**Price Embroidered with Logo:**

**\$51.00**





# INTENT 1/4 ZIP PULLOVER

105640

This traditional 1/4 zip pullover is a flexible piece that everyone should have. Comfortable and stylish, the solid, soft brushed fabrication can be worn for any everyday life event.

- 88% polyester/  
12% spandex brushed jersey fabric (185gsm)
- Self-collar band
- Covered coil zipper with dark antique nickel zipper pull
- Antigua 'A' on right cuff

**S-3XL**



022  
Dark Red

**Blank Price:**

**\$44.00**

**Price Embroidered  
with Logo:**

**\$51.00**





# CONTENT 1/4 ZIP PULLOVER

105714

This solid-colored pullover offers a fun pop of color on the front placket and inner collar. Made with our super soft brushed heathered fabrication, you will want to wear this piece everyday—it is that comfortable.

- 88% polyester/  
12% spandex brushed jersey fabric (185gsm)
- Contrast color self-collar band and placket
- Antigua 'A' on right cuff

**S-3XL**



*Blank Price:*

**\$44.00**

918  
Black / Gold

*Price Embroidered with Logo:*

**\$51.00**





# BRIGHT 1/4 ZIP PULLOVER

105155

Made with our elevated, poly-matte heathered fabric, this piece offers a modern aesthetic with moisture-wicking and four-way stretch. Step up your game in this 1/4 zip pullover.

- 93% polyester/  
7% spandex (180gsm)
- Signature heathered matte poly fabrication
- Antigua 'A' on right cuff

**S-3XL**



*Blank Price:*

\$45.00

723  
Deep Teal Heather

*Price Embroidered with Logo:*

\$52.00



# TWINE 1/4 ZIP PULLOVER

## 105710

Our classic mini micro-stripe pattern gives this pullover a high level of sophistication that is perfect for a round at the country club or a night out with friends.

- 92% polyester/8% spandex (170gsm)
- Mini stripe
- Covered coil zipper with dark antique nickel zipper pull
- Antigua 'A' on right cuff

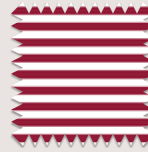
**S-3XL**

*Blank Price: \$44.50*

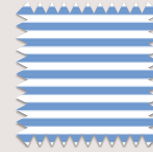
*Price Embroidered with Logo: \$51.50*



185  
Black / White



352  
DARK RED  
/ WHITE



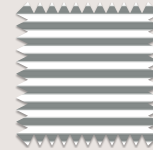
390  
COLUMBIA BLUE  
/ WHITE



347  
DARK ROYAL  
/ WHITE



181  
NAVY  
/ WHITE



76X  
SKYSCRAPER  
/ WHITE



185  
BLACK  
/ WHITE

# TIDY 1/4 ZIP PULLOVER HOOD

## 105167

We added a hood to this heathered matte poly 1/4 zip pullover—providing a trendy spin on a classic design.

- 93% polyester/7% spandex (180gsm)
- Signature heathered matte poly fabrication
- Antigua 'A' on right cuff

**S-3XL**

*Blank Price: \$48.00*

*Price Embroidered with Logo: \$55.00*



041  
Navy Heather



171  
SKYSCRAPER  
HEATHER



041  
NAVY  
HEATHER



055  
DARK  
RED  
HEATHER



094  
BLACK  
HEATHER



243  
DARK  
PURPLE  
HEATHER



716  
DARK PINE  
HEATHER



718  
COLUMBIA  
BLUE  
HEATHER



732  
DARK  
ROYAL  
HEATHER



733  
MANGO  
HEATHER



# GENERATION 1/4 ZIP PULLOVER

104366

The Generation is our flagship style that needs to be in everyone's wardrobe. We offer it in solid and with a contrast color on the chest pocket and storm flap. This classic poly-based top is warm and stylish.

- 90% polyester/10% spandex interlock fabric (240gsm)
- Contrast or solid chest pocket zipper and storm flap
- Antigua 'A' on right cuff

**S-4XL**

## Colors available in S-5XL:

- 022 Dark Red
- 056 Dark Royal
- 224 White / Silver
- 229 Black / Carbon
- 749 Carbon / Silver



68E  
Dark Purple / Carbon

**Blank Price:**

\$53.00

**Price Embroidered with Logo:**

\$60.00



# CAUSE 1/4 ZIP PULLOVER

105188



185  
BLACK / WHITE

This double-brushed, sueded fabric features a cool, broken stripe pattern. This design pairs great with one of our solid polos.

- 88% polyester/12% spandex double brushed fabric (270gsm)
- Reverse tape coil zipper with dark dull antique nickel zipper pull
- Antigua 'A' on right cuff

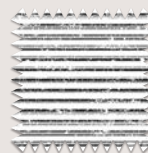
**S-3XL**

*Blank Price: \$49.00*

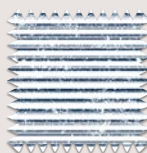
*Price Embroidered with Logo: \$56.00*



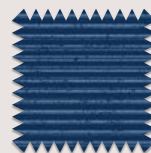
217  
GREY /  
WHITE



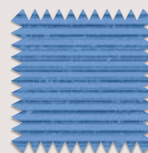
185  
BLACK /  
WHITE



181  
NAVY /  
WHITE



A43  
NAVY /  
QUIET HARBOR



A44  
COLUMBIA BLUE /  
ABSOLUTE

# PERILOUS 1/4 ZIP PULLOVER

105470

Looking for a great, mid-weight, 1/4 zip pullover? Look no further! This is made with flat knit fabric with a cozy brushed back. A must have piece for those chilly mornings.

- 78% polyester/22% spandex brushed interlock fabric (260gsm)
- Exposed coil zipper with dark dull antique nickel zipper pull
- Side seam pockets
- Antigua 'A' on cuff

**S-3XL**

*Blank Price: \$52.00*

*Price Embroidered with Logo: \$59.00*



344  
COLUMBIA BLUE



005  
NAVY



009  
DARK  
PURPLE



010  
BLACK



022  
DARK  
RED



038  
DARK  
PINE



056  
DARK  
ROYAL



87H  
SKYSCRAPER



344  
COLUMBIA  
BLUE



# INSIDER 1/4 ZIP PULLOVER

105088

Featuring another of our signature fabrics, this double-peached polyester 1/4 zip is super cozy. This stretch fabric moves with you with ease and includes chest and side pockets.

- 90% polyester/10% cotton double brushed stretch fabric (250gsm)
- Forward seam with side pockets
- Right side zip pocket for easy storage
- Antigua 'A' on right cuff

**S-3XL**



*Blank Price:*

\$56.00

010  
Black

*Price Embroidered with Logo:*

\$63.00



005  
NAVY



009  
DARK  
PURPLE



010  
BLACK



022  
DARK  
RED



056  
DARK  
ROYAL



87H  
SKYSCRAPER



344  
COLUMBIA  
BLUE

# SPIKES 2 1/4 ZIP PULLOVER HOOD

105720

Spikes is the pinnacle of refined style. A great mid-weight piece made with contrast heathered-slab fabric. The beauty of this design is in the details – featuring corded drawcords, a contrast zipper and double pockets.

- 88% polyester/  
12% spandex brushed  
jersey slab fabric  
(190gsm)
- Corded drawcords,  
double pockets
- Antigua 'A' on  
right sleeve

**S-3XL**



*Blank Price:*

\$56.00

041  
Navy Heather

*Price Embroidered with Logo:*

\$63.00





# CERTAIN 1/4 ZIP PULLOVER

105432

This 1/4 zip pullover is made with marled interlock fabric, providing moisture-wicking and four-way stretch. We added curved saddle sleeves and a zippered chest pocket to add to its upscale look and feel.

- 72% Nylon/15% polyester/13% spandex marled interlock fabric (300gsm)
- Curved saddle sleeves, Covered coil zipper with matte black nickel zipper pull
- Antigua 'A' at right cuff

S-3XL



011  
Grey  
Heather



041  
NAVY  
HEATHER



011  
GREY  
HEATHER



094  
BLACK  
HEATHER

Blank Price: \$65.00

Price Embroidered with Logo: \$72.00



070  
Smoke Heather

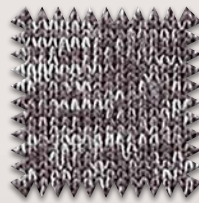
# FORTUNE 1/4 ZIP PULLOVER

101184

Made with polyester sweater knit, this pullover speaks sophistication. This classic look adds subtle color contrast on the sleeves, hem, zipper flap and top of the neck.

- 100% polyester sweater knit fabric (315gsm)
- Welted sleeve pocket with zipper
- Antigua 'A' at back neck

S-5XL



041  
NAVY  
HEATHER



070  
SMOKE  
HEATHER



77H  
OATMEAL  
HEATHER



094  
BLACK  
HEATHER



425  
LIGHT  
GREY  
HEATHER

Blank Price: \$69.00

Price Embroidered with Logo: \$76.00







A close-up photograph of a light-colored, textured knit vest. The vest features a zipper on the left side, with a silver-toned zipper pull. The fabric has a fine, speckled pattern. The text "vests" is centered in the lower half of the image.

# vests

THE MEN'S COLLECTION



# DEMAND FZ VEST

105037

It's all about layering. Whether your headed to the golf course, a ballgame or the office, our signature double peached polyester fabric vest is the perfect piece. It provides warmth and comfort for every occasion.

- 90% polyester/10% cotton double brushed stretch fabric (250gsm)
- Forward seam with side pockets
- Right side zip pocket for easy storage
- Antigua 'A' on lower right hem

**S-3XL**



344  
Columbia Blue



Blank Price: \$52.00

Price Embroidered with Logo: \$59.00



010  
Black

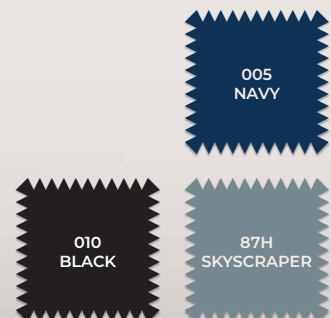
# REGARD FZ VEST

105606

We are excited to launch this new technical, textured poly-knit fabric in this vest. It offers classic styling with modern design details like a right chest welt pocket with hidden zipper and forward-slanted side seam pockets.

- 100% textured polyester (190gsm)
- Right chest welt pocket with hidden zipper
- Forward slanted side seam pockets
- Antigua 'A' on lower right hem

**S-3XL**



Blank Price: \$52.00

Price Embroidered with Logo: \$59.00



# FORTUNE FZ VEST

105632

Made with polyester sweater knit, this upscale vest can be used to dress up or just hanging out. It offers subtle, tonal color on the bottom of the sleeves, hem, zipper flap, pockets, arm holes and top of the neck.

- 100% polyester sweater knit fabric (315gsm)
- Nylon reverse coil zipper
- Welt pockets with edge stitch
- Antigua 'A' on lower right hem

**S-3XL**



77H  
Oatmeal Heather

**Blank Price:**

\$56.00

**Price Embroidered with Logo:**

\$63.00











***jackets***

THE MEN'S COLLECTION



# PIVOT JACKET

104775

Pivot offers a classic, timeless design that will never go out of style...simple yet elegant.

- 100% polyester twill (175gsm)
- Inner liner
- Self-fabric collar
- Welt pockets
- Antigua 'A' at right cuff

**S-3XL**

010  
Black



Blank Price:\$60.00

Price Embroidered with Logo:\$67.00



005  
Navy

# REGARD JACKET

105605

Part of our new technical, textured poly-knit fabric products, this jacket is sure to be a new classic. It features an inner liner, a chest pocket and on-seam side pockets.

- 100% textured polyester (190gsm)
- Inner liner
- Right chest welt pocket with hidden zipper
- On-seam pockets
- Antigua 'A' at right cuff

**S-3XL**



Blank Price:\$60.00

Price Embroidered with Logo:\$67.00



# LINKS 2 GOLF JACKET

105715

Although we call this jacket Links, it can be worn on and off the golf course. The inner lining is a traditional micro polar fleece, which will keep you warm. The outer layer is a waterproof membrane that protects you from the elements.

- 100% polyester fleece bonded with waterproof membrane (280gsm)
- On-seam welt pockets
- Zipper guard with wind flap at interior zipper
- Antigua 'A' on right cuff

**S-3XL**



056  
Dark Royal

Blank Price: \$58.00

Price Embroidered with Logo: \$65.00



005  
Navy

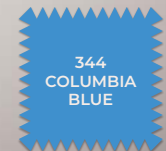
# OBJECTION JACKET

105036

This jacket is made with our signature double peached polyester/spandex fabric. It is super comfortable, warm and versatile with clean lines.

- 90% polyester/10% cotton double brushed stretch fabric (250gsm)
- 2-way covered zipper
- On-seam pockets
- Antigua 'A' on right cuff

**S-3XL**



Blank Price: \$60.00

Price Embroidered with Logo: \$67.00

# HOLD-UP JACKET

105431

This jacket is made with marled interlock fabric, providing a nice, upscale look and feel. We added curved saddle sleeves and a zippered chest pocket to add even more style. If that wasn't enough, it provides moisture-wicking and four-way stretch.

- 72% Nylon/15% polyester/13% spandex marled interlock fabric (300gsm)
- Curved saddle sleeves
- Covered coil zipper with matte black nickel zipper pull
- Front zip pockets
- Antigua 'A' at right cuff

**S-3XL**

011  
Grey Heather



Blank Price: \$69.00

Price Embroidered with Logo: \$76.00



005  
Navy



# SWAY JACKET

104779

This versatile hybrid jacket is a combination of knit and woven fabrics. The solid color, nylon top half of the jacket provides a wind shield while the heathered knit main body provides a stylish contrast look.

- 100% Nylon upper - 82% polyester/18% spandex body and sleeves (250gsm)
- Solid shoelace drawcords
- Front zip pockets
- Antigua 'A' at cuff

**S-3XL**

Blank Price: \$56.00

Price Embroidered with Logo: \$63.00





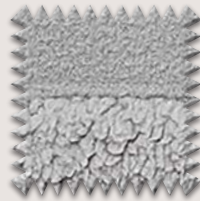
# DAILY FUSED JACKET

105472

We are talking fabric mix here. Micro fleece on the top and sleeves and bonded sherpa on the bottom. The combination provides cool styling with extra warmth and comfort.

- 100% polyester sherpa bonded polar fleece (380gsm)
- Welt zip pocket on right chest
- Front welt hand pockets
- Antigua 'A' woven clip label at bottom right hem

**S-3XL**



87H  
Skyscraper



Blank Price:\$76.00

Price Embroidered with Logo:\$83.00



010  
Black

# SWELTER JACKET

105718

The Swelter Jacket is our take on the quilted "Puffer". Style and warmth is the calling card. We are using 100% nylon taslan with 105gsm poly fill as our base for this classic jacket.

- 100% polyester nylon taslan 228 T with 105 gsm polyester fill
- Quilting with polyester fill
- Inner liner
- On-seam hand pockets
- Antigua 'A' at right cuff

**S-3XL**



Blank Price:\$76.00

Price Embroidered with Logo:\$83.00







*windwear*

THE MEN'S COLLECTION



# BRISK FZ VEST

105684

Cold and wet ... possibly the two worst words when you are on the golf course. Our new wind gear has a water resistant coating and an insulated micro pattern that is lightweight and gives you protection from the elements.

- 100% polyester water and wind resistant fabric (92gsm)
- Right chest zip pocket
- On-seam welt hand pockets
- Clinched toggled drawcord at sweep hem
- Antigua 'A' on right bottom hem

**S-3XL**



005  
Navy

*Blank Price: \$48.00*

*Price Embroidered with Logo: \$55.00*



013  
Stone

*Blank Price: \$50.50*

*Price Embroidered with Logo: \$57.50*

# BRISK SS 1/4 ZIP PULLOVER

105637

Having the round of your life, but rain is coming fast. Our wind gear has a water resistant coating and an insulated micro pattern that is lightweight and gives you protection from the elements.

- 100% polyester water and wind resistant fabric (92gsm)
- On-seam hand pockets
- Clinched toggled drawcord at sweep hem
- Antigua 'A' on right bottom hem

**S-3XL**





# BRISK 1/4 ZIP PULLOVER

105631

The wind is blowing so hard you have to club down two clubs. Our wind gear has a water resistant coating and an insulated micro pattern that is lightweight and gives you protection from the elements.

- 100% polyester water and wind resistant fabric (92gsm)
- Right chest zip pocket
- On-seam hand pockets
- Clinched toggled drawcord at sweep hem
- Antigua 'A' on right bottom hem

**S-3XL**



010  
Black

*Blank Price:*

\$54.50

*Price Embroidered with Logo:*

\$61.50









# *woven shirts*

THE MEN'S COLLECTION



# TENDING 2 LS WOVEN

105816

This isn't your ordinary long sleeve, button-up shirt. A combination of cotton, poly, and spandex make this woven shirt incredibly light, soft, and comfortable. You will love it.

- 70% cotton/27% polyester/3% spandex plaid pattern (110gsm)

- Full button dress shirt
- Button down collar
- Left chest pocket
- Antigua mini folded seam label sewn into top of sleeve placket

**S-3XL**

Blank Price: \$44.00

Price Embroidered with Logo: \$51.00



212  
MAROON /  
GREY / WHITE



179  
DARK RED /  
GREY / WHITE



192  
DARK ROYAL /  
GREY / WHITE



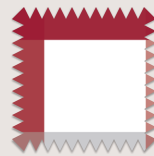
165  
NAVY /  
GREY / WHITE



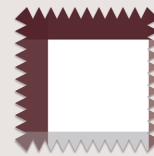
93C  
BLACK /  
GREY / WHITE



172  
DARK PURPLE /  
GREY / WHITE



235  
CARINAL RED /  
GREY / WHITE



212  
MAROON /  
GREY / WHITE



177  
TENNESSEE ORANGE /  
GREY / WHITE



009  
DARK  
PURPLE

# FLIGHT LS WOVEN

104939

When was the last time you said your long sleeve dress shirt was ridiculously comfortable? Probably never. Now you will, with our cotton, poly, and spandex woven material.

- 70% cotton/27% polyester/3% spandex solid (110gsm)
- Full button dress shirt
- Button down collar
- Left chest pocket
- Antigua mini folded seam label sewn into top of sleeve placket

**S-3XL**

Blank Price:

\$48.00

Price Embroidered with Logo:

\$55.00



005  
NAVY



009  
DARK  
PURPLE



010  
BLACK



022  
DARK  
RED



032  
MANGO



038  
DARK  
PINE



043  
CARDINAL  
RED



056  
DARK  
ROYAL



059  
BURNT  
ORANGE



069  
CABERNET



87H  
SKYSCRAPER



150  
TENNESSEE  
ORANGE



152  
MAROON



# ACTIVATE SS WOVEN

10582

This is a really “cool” shirt. Not only does the heathered woven mesh fabric look great, but the micro-ventilation and back vent keeps you cool when you need it.

- 100% polyester textured fabric (130gsm)
- Self-fabric collar with collar stand
- Full button placket
- Ventilated back vent
- Antigua 'A' on right sleeve

**S-3XL**



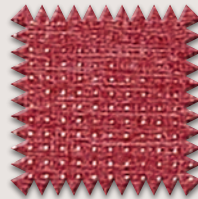
022  
Dark Red



005  
NAVY



010  
BLACK



022  
DARK  
RED



056  
DARK  
ROYAL



87H  
SKYSCRAPER

Blank Price: \$44.00

Price Embroidered with Logo: \$51.00



010  
Black

# EXPOSURE LS WOVEN

10581

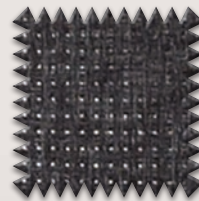
For this long sleeve shirt we use our woven mesh, heathered fabric. With its micro ventilation, you are sure to stay calm, cool, and collected—even in the most heated circumstances ... and look great.

- 100% polyester textured fabric (130gsm)
- Self-fabric collar with collar stand
- Full button placket
- Antigua “A” logo on right sleeve

**S-3XL**

Blank Price: \$48.00

Price Embroidered with Logo: \$55.00



005  
NAVY



010  
BLACK



022  
DARK  
RED



043  
CARDINAL  
RED



056  
DARK  
ROYAL



87H  
SKYSCRAPER



152  
MAROON



344  
COLUMBIA  
BLUE









*fleece*

THE MEN'S COLLECTION





# VICTORY CREW

105482

This is a great everyday, traditional crewneck fleece piece. Made with heavyweight cotton polyester brushed back fleece, it is incredibly comfortable and warm.

- 52% cotton/48% polyester brushed back fleece (330gsm)
- Forward roll shoulder seam
- 2x2 rib detail at collar, cuff and hem
- Antigua 'A' on right cuff

**S-3XL**



056  
Dark Royal

*Blank Price:*

*\$44.00*

*Price Embroidered with Logo:*

*\$51.00*





# VICTORY PO HOOD

101182

Everyone has a favorite heavyweight cotton fleece hoodie ... and this will be yours. Made with polyester brushed back fleece, this sweatshirt is the perfect hoodie for living your best life.

- 52% cotton/48% polyester brushed back fleece (330gsm)
- Contrast drawcords and hoodliner
- Kangaroo pocket
- Rib cuff and hem
- Antigua 'A' at top of hood

**S-3XL**

**Colors available in S-5XL:**

- 001 White
- 005 Navy
- 010 Black
- 011 Grey Heather
- 022 Dark Red
- 056 Dark Royal
- 196 Charcoal



069  
Cabernet

Blank Price: \$47.50

Price Embroidered with Logo: \$54.50





# VICTORY 1/4 ZIP PULLOVER

105483

Our heavyweight 1/4 zip pullover is a more refined take on our classic fleece. Made with our cotton polyester brushed back fleece.

- 52% cotton/48% polyester brushed back fleece (330gsm)
- Covered zipper detail
- Forward roll shoulder seam
- 2x2 rib detail at cuff and hem
- Antigua 'A' on right cuff

**S-3XL**



011  
Grey Heather

**Blank Price:**

\$47.50

**Price Embroidered with Logo:**

\$54.50





# VICTORY FZ HOOD

101183

Our heavyweight cotton polyester fleece piece in a full-zip hoodie. This is a great layering piece for when the weather is just a bit chilly.

- 52% cotton/  
48% polyester brushed back fleece (330gsm)
- Full-zip with raglan sleeves
- Contrast drawcords and hoodliner
- Kangaroo pocket
- Rib cuff and hem
- Antigua 'A' at top of hood

**S-3XL**

## Colors available in S-5XL:

- 001 White
- 005 Navy
- 010 Black
- 011 Grey Heather
- 022 Dark Red
- 056 Dark Royal
- 196 Charcoal

**Blank Price:**

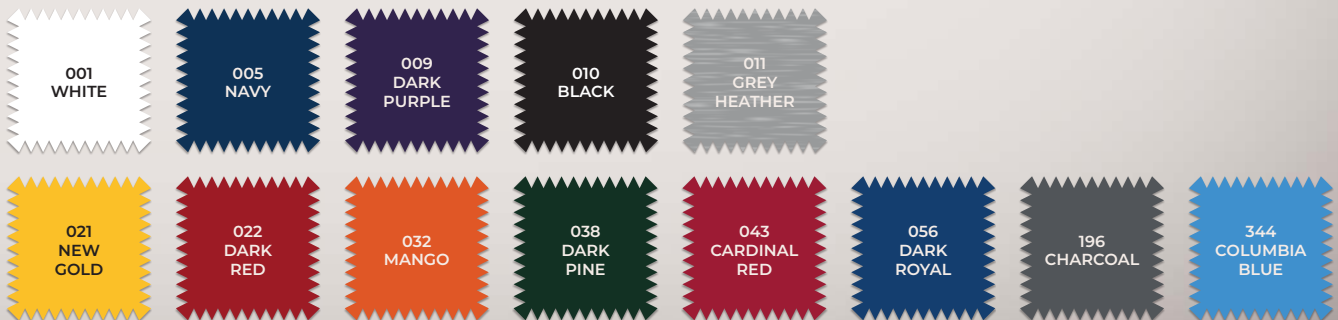
\$49.50

**Price Embroidered with Logo:**

\$56.50



021  
New Gold





# SUBTLE 1/4 ZIP PULLOVER

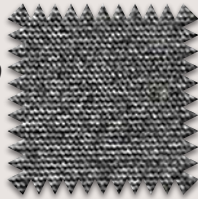
105435

094  
Black Heather

Made with our new, ridiculously soft brushed heather fabric, this 1/4 zip pullover will provide you with a layer of warmth on and off the course.

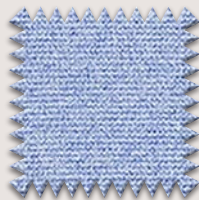
- 91% polyester/9% spandex signature buffed fleece (260gsm)
- 8-inch zipper with covered placket dyed to match tipped plastic zipper pull
- Self-fabric cuff and hem
- Antigua 'A' on right cuff

**S-3XL**



Blank Price:\$52.00

Price Embroidered with Logo:\$59.00



718  
Columbia  
Blue  
Heather

# CLOUD PO HOOD

105650

Introducing a ridiculously soft new fabric made of brushed heather fleece. This just may be the softest hoodie you have ever worn.

- 91% polyester/9% spandex signature buffed fleece (260gsm)
- 3-piece clean finish hood
- Braided drawcords with rubberized tips
- Kangaroo pocket
- Antigua 'A' on right cuff

**S-3XL**

Blank Price:\$54.00

Price Embroidered with Logo:\$61.00



# EFFORTLESS FZ HOOD

105651

Our softest fabric provides both comfort and style. This full-zip hoodie is the perfect layering piece for running around town or tailgating before a big game.

- 91% polyester/9% spandex signature buffed fleece (260gsm)
- Braided drawcords with rubberized tips
- Kangaroo pocket
- Antigua 'A' on right cuff

**S-3XL**

A39  
Burnt Olive  
Heather



Blank Price:\$56.00

Price Embroidered with Logo:\$63.00



# VICTORY SWEATPANT

105557

There is nothing better than hanging out in a great, heavyweight pair of sweatpants. Our cotton and polyester brushed back fleece make for really comfortable sweatpants.

- 52% cotton/48% polyester brushed back fleece (330gsm)
- open bottom hem
- elastic waistband with internal drawcord
- Back right zip pocket
- side seam pockets
- Antigua 'A' on back right hip

**S-3XL**

010  
Black

Blank Price:\$48.00





A scenic view of a golf course with a clubhouse, mountains, and cacti. The foreground features a wicker chair with a beige and orange cushion. The middle ground shows a green golf course with a large saguaro cactus. The background includes a clubhouse and rugged mountains under a clear sky.

***Men's  
Big & Tall***







# LEGACY PIQUE

## POLO TALL

104357

One of our classic polos. Made with solid pique fabric in 100% poly. It delivers comfort, moisture-wicking and a sophisticated look.

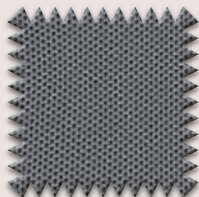
- 100% Polyester Pique Knit (170gsm)
- Flat Knit collar
- Cut and sew sleeve cuffs
- 3-button placket
- Antigua 'A' on right sleeve

**XLT-4XLT**

Blank Price: \$39.50

Price Embroidered with Logo: \$46.50

017  
Carbon



022  
Dark Red

# TRIBUTE POLO TALL

104368

One of our core polos. Made with 100% poly jersey fabric. It has a great fit and is really comfortable. Looks great on and off the course.

- 100% polyester interlock knit (175gsm)
- Self-fabric collar
- Open cuff
- Narrow 3-button placket
- Antigua 'A' on right sleeve

**XLT-4XLT**



Blank Price: \$42.50

Price Embroidered with Logo: \$49.50

# PAR 3 POLO TALL

105774

Enjoy and relax in comfort with our signature, super-soft brushed heathered fabric. The fabric is made with a poly stretch fabrication which will allow you to move with ease no matter when and how you wear it.

- 88% polyester/12% spandex brushed heather jersey fabric (186gsm)
- Self-collar band, side vents
- Matte logo buttons
- Antigua 'A' on right sleeve

**XLT-4XLT**

Blank Price:\$47.50

Price Embroidered with Logo:\$54.50

732  
Dark Royal  
Heather



658  
Navy Multi



# TUNNEL POLO TALL

105776

This is not your everyday striped polo. The tonal shadow stripe creates a textural look with its high low stripe pattern detail.

- 92% polyester/8% spandex tonal stripe (180gsm)
- Self-fabric collar
- Matte logo buttons
- Side vents
- Antigua 'A' on right sleeve

**XLT-4XLT**



Blank Price:\$47.00

Price Embroidered with Logo:\$54.00



# ELLIPSE POLO TALL

105775

We made this geometric print tonal to provide a subtle yet upscale all-over print. You will look sharp whether on the course or out on the town.

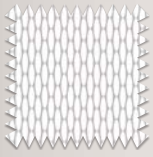
- 94% polyester/6% spandex (190gsm)
- Sublimated ellipse print
- Matte logo buttons
- Antigua 'A' on right sleeve

**XLT-4XLT**

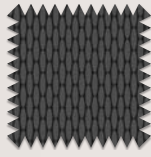
Blank Price:\$52.00

Price Embroidered with Logo:\$59.00

658  
Navy Multi



230  
WHITE MULTI



891  
CARBON MULTI



658  
NAVY MULTI



056  
Dark Royal

# VICTORY CREW TALL

105779

This is a great everyday, traditional crewneck fleece piece. Made with heavyweight cotton polyester brushed back fleece, it is incredibly comfortable and warm.

- 52% cotton/48% polyester brushed back fleece (330gsm)
- Forward roll shoulder seam
- 2x2 rib detail at collar, cuff and hem
- Antigua 'A' on right cuff

**XLT-4XLT**



005  
NAVY



010  
BLACK



011  
GREY  
HEATHER



022  
DARK  
RED



056  
DARK  
ROYAL

Blank Price:\$52.00

Price Embroidered with Logo:\$59.00

# VICTORY PO HOOD TALL

105778

Everyone needs a heavyweight cotton fleece hoodie ... and this is it. Made with polyester brushed back fleece, this hoodie is the perfect hoodie for living your best life.

- 52% cotton/48% polyester brushed back fleece (330gsm)
- Contrast drawcords and hood
- Kangaroo pocket
- Rib cuff and hem
- Antigua 'A' at top of hood

**XLT-4XLT**



**Blank Price:**

\$55.50

196  
Charcoal

**Price Embroidered with Logo:**

\$62.50





# VICTORY FZ HOOD TALL

105777

We offer one more heavyweight cotton polyester fleece piece. This one is our full-zip hoodie. This is a great layering piece for when the weather is just a bit chilly.

- 52% cotton/48% polyester brushed back fleece (330gsm)
- Full-zip with raglan sleeves, kangaroo pocket, rib cuff and hem
- Antigua 'A' at top of hood

**XLT-4XLT**



*Blank Price:*

\$57.50

010  
Black

*Price Embroidered with Logo:*

\$64.50



001  
WHITE



005  
NAVY



010  
BLACK



011  
GREY  
HEATHER

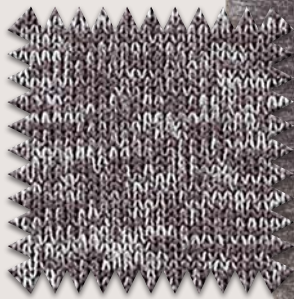
# FORTUNE 1/4 ZIP PULLOVER TALL

104261

This is simply a great piece. Made with polyester sweater knit, this pullover speaks sophistication. It offers subtle contrast color on the bottom of the sleeves, hem, zipper flap and top of the neck.

- 100% polyester sweater knit fabric (315gsm)
- Welled sleeve pocket with zipper
- Antigua 'A' at back neck

**XLT-4XLT**



*Blank Price:*

\$72.00

070  
Smoke Heather

*Price Embroidered with Logo:*

\$79.00





A photograph of a tree with a thick, dark trunk and dense green foliage. The word "Women's" is overlaid in white, italicized text. The background is a wall of green ivy. The foreground shows a concrete sidewalk and some dry grass.

***Women's***







# FORTUNE 1/4 ZIP PULLOVERS & VEST



101184 – Men's  
070 SMOKE HEATHER



101306 – Women's  
77H OATMEAL HEATHER



105632 – Men's  
77H OATMEAL HEATHER

Blank Price:  
\$69.00

Price Embroidered with Logo:  
\$76.00

Blank Price:  
\$56.00

Price Embroidered  
with Logo:  
\$63.00

Available Soon - Call  
for Updates



# PIVOT & EVEN PAR JACKETS



104775 – Men's

010 BLACK



104760 – Women's

005 NAVY

Blank Price:

\$60.00

Price Embroidered with Logo:

\$67.00

Available Soon - Call for  
Updates



005  
NAVY



010  
BLACK



87H  
SKYSCRAPER



# REGARD JACKETS & VEST



105605 – Men's  
005 NAVY



105680 – Women's  
87H SKYSCRAPER



105606 – Men's  
010 BLACK

Blank Price:  
\$60.00

Price Embroidered with Logo:  
\$67.00

Available Soon - Call for  
Updates

Blank Price:  
\$52.00

Price Embroidered  
with Logo:  
\$59.00

Available Soon - Call  
for Updates



# LINKS 2 JACKETS



105715 – Men's  
056 DARK ROYAL



105716 – Women's  
87H SKYSCRAPER

Blank Price:  
\$58.00

Price Embroidered with Logo:  
\$65.00

Available Soon - Call for  
Updates





DAILY FUSED JACKET, FIGURE 1/4 ZIP PULLOVER, & NOSTALGIC VEST



105472 – Men's  
87H SKYSCRAPER

Blank Price:  
\$76.00

Price Embroidered  
with Logo:  
\$83.00

Available Soon - Call  
for Updates



105408 – Women's  
005 NAVY

Blank Price:  
\$72.00

Price Embroidered  
with Logo:  
\$79.00

Available Soon - Call  
for Updates



105405 – Women's  
010 BLACK

Blank Price:  
\$68.00

Price Embroidered  
with Logo:  
\$75.00

Available Soon - Call  
for Updates



# SWELTER & UNIVERSE JACKETS & EXPERIENCE VEST



105718 – Men's

010 BLACK

Blank Price:

\$76.00

Price Embroidered  
with Logo:

\$83.00

Available Soon - Call  
for Updates



105383 – Women's

005 NAVY

Blank Price:

\$72.00

Price Embroidered  
with Logo:

\$79.00

Available Soon - Call  
for Updates



105384 – Women's

022 DARK RED

Blank Price:

\$64.00

Price Embroidered  
with Logo:

\$71.00

Available Soon - Call  
for Updates



001  
WHITE



005  
NAVY



010  
BLACK



022  
DARK  
RED



056  
DARK  
ROYAL



87H  
SKYSCRAPER



201  
BLACK  
MULTI



# SUBTLE & CRUSH 1/4 ZIP PULLOVERS



105435 – Men's  
094 BLACK HEATHER

Blank Price:  
\$52.00

Price Embroidered with  
Logo:  
\$59.00



105377 – Women's  
718 COLUMBIA BLUE HEATHER

Blank Price:  
\$52.00

Price Embroidered with  
Logo:  
\$59.00

Available Soon - Call for  
Updates



# CLOUD & JUSTICE PO HOODS



105650 – Men's

732 DARK ROYAL HEATHER



105376 – Women's

243 DARK PURPLE HEATHER

Blank Price:

\$54.00

Price Embroidered with Logo:

\$61.00

Available Soon - Call for Updates





# EFFORTLESS & SEEKER FZ HOODS



105651 – Men's

A39 BURNT OLIVE HEATHER



105374 – Women's

011 GREY HEATHER

Blank Price:

\$56.00

Price Embroidered with Logo:

\$63.00

Available Soon - Call for  
Updates



# VICTORY CREWS



105482 – Men's

056 DARK ROYAL



104726 – Women's

080 OLIVE

Blank Price:  
\$44.00

Price Embroidered with Logo:  
\$51.00





# VICTORY PO HOODS



101182 – Men's

069 CABERNET



104727 – Women's

021 NEW GOLD

Blank Price:  
\$47.50

Price Embroidered with Logo:  
\$54.50



# VICTORY 1/4 ZIP PULLOVERS



105483 – Men's

011 GREY HEATHER

Blank Price:

\$47.50

Price Embroidered with Logo:

\$54.50



105484 – Women's

010 BLACK

Blank Price:

\$47.50

Price Embroidered with Logo:

\$54.50

Available Soon - Call for Updates





# VICTORY FZ HOODS



101183 – Men's

021 NEW GOLD



101185 – Women's

069 CABERNET

Blank Price:

\$49.50

Price Embroidered with Logo:

\$56.50



# VICTORY SWEATPANTS



105557 – Men's

010 BLACK



105536 – Women's

011 GREY HEATHER

Blank Price:  
\$48.00





## **NEW ORDER WITH EMBROIDERY DESIGN**

Minimum order 24 units. No charge for one embroidery disk setup.

Additional disk setup - \$75.00

We request suitable artwork be provided by the customer. We can utilize letterhead, business cards, matchbook covers, etc. The embroidery disk produced from your artwork shall remain the property of Antigua.

## **LARGE SIZE UPCHARGE**

3XL & 4XL - \$3.00 per garment (available in select styles)

## **GUARANTEE & WARRANTY**

Antigua guarantees its products and embroidery against manufacturing defects only. Soiled, worn or torn items are not exchangeable.

## **CORRECTIONS & CANCELLATIONS**

Corrections/additions to merchandise orders are accepted prior to production. All cancellations must be in writing. Changes made to embroidery disks made after approval may incur additional charges. Merchandise orders canceled prior to production will incur:

1. 10% restocking fee
2. Artwork fee, if applicable
3. Disk preparation fee, if applicable

All orders are non-cancellable once they are in production.

## **SHIPPING**

Antigua utilizes the FED EX system or Common Carrier for larger orders. Shipping charges are invoiced with order (no COD shipments).

All goods ship: FOB Peoria, AZ

## **DROP SHIPPING**

Drop shipments accepted if minimum order requirements are met.

All merchandise drop-shipped to third parties (e.g. screen printers, embroiderers, etc.) must be inspected for accuracy and product flaw before decorating. Antigua is not responsible for discrepancies on orders after decoration by an outside embroiderer.

## **EMBROIDERY**

All artwork development, digitizing and embroidery is done on site. Your company logo can be embroidered in up to seven colors, which can be color coordinated to the garment. Embroidery can be positioned on the left or right chest of the garment, on sleeves and shirt collars.

## **EMBROIDERY CHARGES**

Embroidery charges will be applied based on the logo stitch count as follows: Listed prices are up to 8,500 stitches \$7.00 for 8,501 to 10,000 stitches. 10,000+ stitches by quote

## **DECORATION CHARGES**

Chenille - Add \$10.00 to FF Standard Price. 500 pc MIN per team outside of NFL.

Metallic Brush - No Upcharge. 500 pc MIN per team outside of NFL.

Tonal Logo - No Upcharge. 500 pc MIN per team outside of NFL.

Flex Patch - Add \$3.50 to LC Standard Price. 100 pc MIN per team.

## **TERMS & CONDITIONS**

Net 30 days from invoice date with credit approval.

No merchandise is returnable without written authorization from Antigua. All request for return authorization must be submitted within 3 months of delivery.

No merchandise is shipped without credit approval. Distribution and assortments subject to approval.

# SIZE CHARTS

## MEN'S

### Men's Tops

| US Size    | 34 – 36<br>S | 38 – 40<br>M | 42 – 44<br>L | 46 – 48<br>XL | 50 – 52<br>2XL | 54 – 56<br>3XL | 58 – 60<br>4XL | 62 – 64<br>5XL |
|------------|--------------|--------------|--------------|---------------|----------------|----------------|----------------|----------------|
| Neck (in)  | 15 – 15.5    | 16 – 16.5    | 17 – 17.5    | 18 – 18.5     | 19 – 19.5      | 20 – 21        | 21.5 – 22      | 22.5 – 23.5    |
| Chest (in) | 34 – 36      | 36 – 40      | 40 – 44      | 44 – 48       | 48 – 52        | 52 – 56        | 56 – 60        | 60 – 64        |
| Waist (in) | 28 – 30      | 30 – 34.5    | 34.5 – 38.5  | 38.5 – 43.5   | 43.5 – 48.5    | 48.5 – 54      | 54 – 58        | 58 – 62        |
| Hip (in)   | 33.5 – 35.5  | 37.5 – 39.5  | 39.5 – 44    | 44 – 47       | 47 – 50        | 50 – 53.5      | 53.5 – 57.5    | 57.5 – 61.5    |

*The size chart is intended for reference only. Sizes may vary between styles.*

### Men's Bottoms

| US Size    | S           | M           | L           | XL          | 2XL         | 3XL       | 4XL         | 5XL         |
|------------|-------------|-------------|-------------|-------------|-------------|-----------|-------------|-------------|
| Waist (in) | 28 – 30     | 30 – 34.5   | 34.5 – 38.5 | 38.5 – 43.5 | 43.5 – 48.5 | 48.5 – 54 | 54 – 58     | 58 – 62     |
| Hip (in)   | 33.5 – 35.5 | 37.5 – 39.5 | 39.5 – 44   | 44 – 47     | 47 – 50     | 50 – 53.5 | 53.5 – 57.5 | 57.5 – 61.5 |

*The size chart is intended for reference only. Sizes may vary between styles.*

Body measurements are given in inches. If you're on the border between two sizes, order the smaller size for a tighter fit or the larger size for a looser fit. If your measurements for chest and waist correspond to two different suggested sizes, order the size indicated by your chest measurement.

Size charts define the measurement of the body and not the garment.



# WOMEN'S

## Women's Tops/Bottoms

| US Size           | 0 - 2<br>XS | 4 - 6<br>S  | 8 - 10<br>M | 12 - 14<br>L | 16 - 18<br>XL | 20<br>2XL | 3XL       | 4XL |
|-------------------|-------------|-------------|-------------|--------------|---------------|-----------|-----------|-----|
| <b>Chest (in)</b> | 31 - 33     | 33 - 35.5   | 35.5 - 38   | 38 - 41      | 41 - 44       | 44 - 47.5 | 47.5 - 51 | NA  |
| <b>Waist (in)</b> | 25 - 27     | 27 - 29     | 29 - 31.5   | 31.5 - 34.5  | 34.5 - 38     | 38 - 41.5 | 41.5 - 45 | NA  |
| <b>Hip (in)</b>   | 34 - 36     | 35.5 - 38.5 | 38.5 - 40.5 | 40.5 - 43.5  | 43.5 - 46.5   | 46.5 - 50 | 50 - 53.5 | NA  |

*The size chart is intended for reference only. Sizes may vary between styles.*

## Women's Bottoms

| US Size           | 0 - 2<br>XS | 4 - 6<br>S  | 8 - 10<br>M | 12 - 14 L   | 16 - 18 XL  | 20<br>2XL | 3XL       | 4XL |
|-------------------|-------------|-------------|-------------|-------------|-------------|-----------|-----------|-----|
| <b>Waist (in)</b> | 25 - 27     | 27 - 29     | 29 - 31.5   | 31.5 - 34.5 | 34.5 - 38   | 38 - 41.5 | 41.5 - 45 | NA  |
| <b>Hip (in)</b>   | 34 - 36     | 35.5 - 38.5 | 38.5 - 40.5 | 40.5 - 43.5 | 43.5 - 46.5 | 46.5 - 50 | 50 - 53.5 | NA  |

*The size chart is intended for reference only. Sizes may vary between styles.*

Body measurements are given in inches. If you're on the border between two sizes, order the smaller size for a tighter fit or the larger size for a looser fit. If your measurements for chest and waist correspond to two different suggested sizes, order the size indicated by your chest measurement.

Size charts define the measurement of the body and not the garment.



For more information or  
to find your local sales rep:



To view this catalog  
in a digital format:



16651 North 84th Avenue  
Peoria, AZ 85382  
T: 623-523-6000







A

# *polos*

THE WOMEN'S COLLECTION



# LEGACY PIQUE POLO W

104275

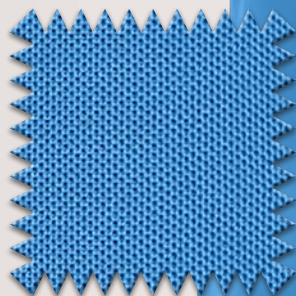
A classic wardrobe staple. Made with solid pique fabric in 100% poly. It delivers comfort, moisture-wicking and a clean, sophisticated look.

- 100% Polyester Pique Knit (170gsm)
- Flat Knit collar
- Cut and sew sleeve cuffs
- 4-button placket
- Antigua 'A' on right sleeve

**XS-2XL**

## Colors available in S-3XL:

- 032 Mango
- 043 Cardinal Red
- 344 Columbia Blue



## Colors available in S-4XL:

- 001 White
- 005 Navy
- 010 Black
- 017 Carbon
- 022 Dark Red
- 056 Dark Royal



344  
Columbia Blue

*Blank Price:*

\$31.50

*Price Embroidered with Logo:*

\$38.50



001  
WHITE



005  
NAVY



010  
BLACK



017  
CARBON



022  
DARK  
RED



032  
MANGO



043  
CARDINAL  
RED



056  
DARK  
ROYAL



344  
COLUMBIA  
BLUE

# TRIBUTE POLO W

104198

One of our core polos. Made with 100% poly jersey fabric. Looks great fit and feels great on. The perfect polo for everyday life.

- 100% polyester interlock knit (175gsm)
- Self-fabric collar
- Open cuff
- 2-button placket
- Antigua 'A' on right sleeve

**XS-2XL**

**Colors available in S-3XL:**

- 009 Dark Purple
- 038 Dark Pine
- 344 Columbia Blue

**Colors available in S-4XL:**

- 001 White
- 005 Navy
- 010 Black
- 022 Dark Red
- 056 Dark Royal
- 076 Smoke



032  
Mango

**Blank Price:**

\$34.50

**Price Embroidered with Logo:**

\$41.50





# REPROCESS POLO W

105662

New to our fabric story is our sustainable material — made from recycled plastic materials. This polo is made with recycled polyester and spandex. The hand on this is really soft and also provides moisture wicking and four-way stretch for extra comfort.

- 90% recycled polyester/10% spandex (180gsm)
- Self-fabric collar
- Side vents
- 3-button placket
- Antigua 'A' on right sleeve

**XS-2XL**



010  
Black

**Blank Price:**

\$36.00

**Price Embroidered with Logo:**

\$43.00



# TUNNEL POLO W

105678

This is one classy looking striped polo. The tonal shadow stripe creates a textural look with its high low stripe pattern detail. Looks great on and off the course.

- 92% polyester/8% spandex tonal stripe (180gsm)
- Self-fabric collar
- Matte logo buttons
- Side vents
- Antigua 'A' on right sleeve

**XS-2XL**



**Blank Price:**

\$39.00

993  
Columbia Blue

**Price Embroidered with Logo:**

\$46.00





# MATTER POLO W

105239

This polo "matters". Made with our signature soft heathered brushed poly, this may be one of the most comfortable polos you have ever worn. The elevated fabric provides a modern aesthetic with moisture-wicking and four-way stretch.

- 88% polyester/12% spandex (186gsm)
- Signature soft heathered brushed poly
- Self-fabric collar with top stitch
- Matte buttons
- Antigua 'A' on right sleeve

**XS-2XL**



91Y  
Pastel  
Lilac  
Heather



Blank Price:\$39.50

Price Embroidered with Logo:\$46.50



95Y  
Aurora Heather

# LAYOUT V-NECK POLO W

105719

This poly matte heather polo is perfect for just about any occasion. The v-neckline provides a stylish look. You can tee-it-up in it or just hang with friends at the 19th hole.

- 93% polyester/7% spandex (180gsm)
- Signature heathered matte poly fabrication
- Open placket v-neckline
- Antigua 'A' on right sleeve

**XS-2XL**



Blank Price:\$41.00

Price Embroidered with Logo:\$48.00

# LAYOUT S/L POLO W

## 105717

Super soft and comfortable, this poly matte heather polo is perfect for a beautiful day on the course. Let the sun shine on you and play great.

- 93% polyester/7% spandex (180gsm)
- Signature heathered matte poly fabrication
- Open placket v-neckline

**XS-2XL**

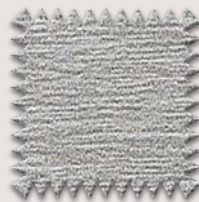


055  
Dark Red  
Heather



Blank Price:\$36.00

Price Embroidered with Logo:\$43.00



171  
Skyscraper

# RECAP S/L POLO W

## 105350

Made with our poly matte fabric, this is an easy wearing polo. Looks great and feels great. Provides versatility for any of life's activities and is also perfect under a 1/4 zip pullover or jacket.

- 88% polyester/12% spandex (186gsm)
- Signature soft heathered brushed poly
- 3-button placket
- Rib collar and armholes

**XS-2XL**



Blank Price:

\$36.00

Price Embroidered with

Logo:

\$43.00



# ERA POLO W

105694

This polo features our elevated, super-soft brushed heathered fabric. It offers a modern aesthetic along with moisture-wicking and four-way stretch for ultra comfort.

- 88% polyester/  
12% spandex brushed jersey fabric (185gsm)
- Self-collar band
- Side vents
- Matte logo buttons
- Antigua 'A' on right sleeve

**XS-2XL**



022  
Dark Red

*Blank Price:*

\$39.50

*Price Embroidered with Logo:*

\$46.50



# RINGS POLO W 105712

If you are looking for a classy, all over print polo, this is for you. This polo features an eye-catching, yet subtle geometric print. And, the fabric provides moisture-wicking and four-way stretch.

- 94% polyester/6% spandex (180gsm)
- Ply sheen jersey fabric
- Sublimated rings print
- Matte logo buttons
- Antigua 'A' on right sleeve

**XS-2XL**



31W  
White / Skyscraper

**Blank Price:**

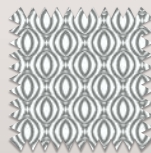
\$44.00

**Price Embroidered with Logo:**

\$51.00



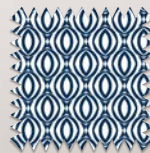
A46  
WHITE /  
QUIET HARBOR



31W  
WHITE /  
SKYSCRAPER



222  
WHITE /  
BLACK



223  
WHITE /  
NAVY







A close-up photograph of a dark blue, textured zippered pullover. The image shows the upper portion of the garment, including the collar and the zipper mechanism. The fabric has a fine, pebbled texture. The zipper is a dark color with a metallic pull tab. The lighting is soft, highlighting the texture of the fabric and the details of the zipper.

# *zippered pullovers*

THE WOMEN'S COLLECTION



# TRIBUTE 1/2 ZIP PULLOVER W

104682

This is a classic 1/4 zip pullover. Perfect layering piece for all activities. Made with one of our core fabrics – 100% poly jersey, it provides comfort moisture-wicking and easy-care.

- 100% polyester interlock knit (175gsm)
- Self-fabric collar
- Open cuff and hem
- Antigua 'A' on back of neck

S-2XL



Blank Price:

\$41.00

344  
Columbia Blue

Price Embroidered with Logo:

\$48.00



# REPROCESS 1/4 ZIP PULLOVER W 105663

This pullover is part of our sustainable fabric collection. Made from recycled plastic materials, this fabric blends recycled polyester and spandex. The hand on this is really soft and also provides moisture wicking and four-way stretch, for extra comfort.

- 90% recycled polyester/10% spandex (180gsm)
- Self-fabric collar
- Covered coil zipper with matte black nickel zipper pull
- Antigua 'A' on right cuff

**XS-2XL**



056  
Dark Royal

*Blank Price:*

*\$42.00*

*Price Embroidered with Logo:*

*\$49.00*





# INTENT 1/4 ZIP PULLOVER W 105695

This traditional 1/4 zip pullover is a really flexible piece that every woman should have in her wardrobe ... Comfortable and stylish, the solid, soft brushed fabrication can be worn everyday, for whatever your day holds.

- 88% polyester/12% spandex brushed jersey fabric (185gsm)
- Self-collar band
- Covered coil zipper with dark antique nickel zipper pull
- Antigua 'A' on right cuff

**XS-2XL**



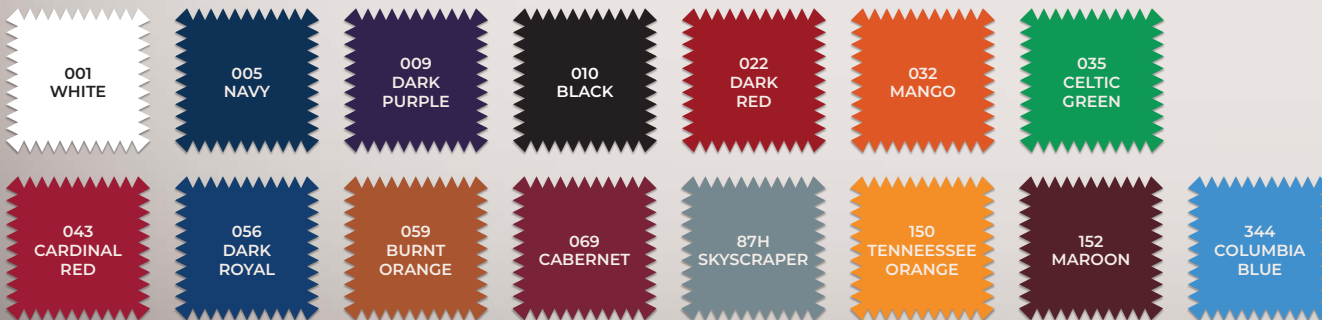
009  
Dark Purple

*Blank Price:*

\$44.00

*Price Embroidered with Logo:*

\$51.00



# BRIGHT 1/4 ZIP PULLOVER W 105673

Made with our elevated, poly matte heather fabric, this piece offers a modern aesthetic with moisture-wicking and four-way stretch. A great piece to tee-it-up in or wear to your favorite teams game.

- 93% polyester/7% spandex (180gsm)
- Signature heathered matte poly fabrication
- Antigua 'A' on right cuff

094  
Black  
Heather



**XS-2XL**



Blank Price:\$45.00

Price Embroidered with Logo:\$52.00



33X  
Harbor Heather

# MENTOR 1/4 ZIP PULLOVER W 105240

Enjoy and relax in comfort with our signature, super soft brushed heathered fabric. This fabric provides plenty of stretch, so it is really perfect for any activity that comes your way.

- 88% polyester/12% spandex (186gsm)
- Signature soft heathered brushed poly
- Covered zipper placket
- Antigua 'A' on right sleeve

**XS-2XL**



Blank Price:

\$44.00

Price Embroidered with Logo:

\$51.00



# DAYBREAK 1/4 ZIP

## HOOD W

105668

Soft, soft soft. Did we say this piece is super soft? After you put this 1/4 zip pullover on, you may never take it off. It is a great layering piece for the golf course, coffee with your friends, or the yoga class—just name it. This is the pullover for you.

- 88% polyester/12% spandex (186gsm)
- Signature soft heathered brushed poly
- Covered zipper placket
- Antigua 'A' on right sleeve

**XS-2XL**

094  
Black  
Heather

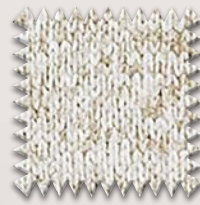


Blank Price: \$48.00

Price Embroidered with Logo: \$55.00



77H  
Oatmeal Heather



# FORTUNE 1/4 ZIP

## PULLOVER W

101306

This is a beautiful and warm pullover. Made with polyester sweater knit, this pullover speaks sophistication. It offers subtle contrast color on the bottom of the sleeves, hem, zipper flap and top of the neck.

- 100% polyester sweater knit fabric (315gsm)
- welted sleeve pocket with zipper
- Antigua 'A' at back neck

**S-3XL**

Blank Price:

\$69.00

Price Embroidered with Logo:

\$76.00



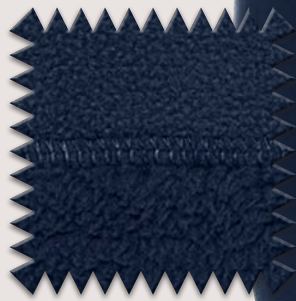
# FIGURE 1/4 ZIP PULLOVER W

105408

If you are looking for extra warmth and comfort, our Figure 1/4 zip pullover is for you. We are talking fabric mix here. Micro fleece on the top and sleeves and bonded sherpa on the bottom.

- 100% polyester sherpa bonded polar fleece (380gsm)
- Sherpa lined inner collar
- Front zip hand pockets
- Antigua 'A' woven clip label at bottom right hem

**XS-2XL**



005  
Navy

*Blank Price:*

\$72.00

*Price Embroidered with Logo:*

\$79.00









A close-up photograph of a red quilted vest. The vest features a prominent zipper running diagonally from the top center towards the bottom right. The fabric is quilted, showing distinct rectangular panels. The zipper pull is black and has some small text on it. The overall lighting is bright, highlighting the texture of the fabric and the metallic teeth of the zipper.

# **vests**

**THE WOMEN'S COLLECTION**



# EXPERIENCE FZ VEST W

105384

Looking for a warm and stylish, cool weather vest? Look no further. Here is the Experience vest. Made with our matte puffer jacket fabric and poly fill, this vest is a must have.

- 100% polyester nylon taslan 228 T with 105 gsm polyester fill
- Quilting with polyester fill
- Inner liner
- On-seam hand pockets
- Antigua 'A' at right bottom hem

**XS-2XL**



022  
Dark Red

*Blank Price:*

\$64.00

*Price Embroidered with Logo:*

\$71.00



# NOSTALGIC FZ VEST W

105405

We are talking fabric mix here. Micro fleece on the top and bonded sherpa on the bottom. The combination provides cool styling with extra warmth and comfort.

- 100% polyester sherpa bonded polar fleece (380gsm)
- Sherpa lined inner collar
- Front zip hand pockets
- Antigua 'A' woven clip label at bottom right hem

**XS-2XL**



*Blank Price:*

*\$68.00*

010  
Black

*Price Embroidered with Logo:*

*\$75.00*











*jackets*

THE WOMEN'S COLLECTION



# GENERATION JACKET W

104367

A must have jacket. We offer it in solid and also with a contrasting pop of color on the chest pocket and storm flap. This poly based top is warm and stylish.

- 90% polyester/10% spandex interlock fabric (240gsm)
- Contrast or solid chest pocket zipper and storm flap
- Antigua 'A' on back of neck

**XS-3XL**



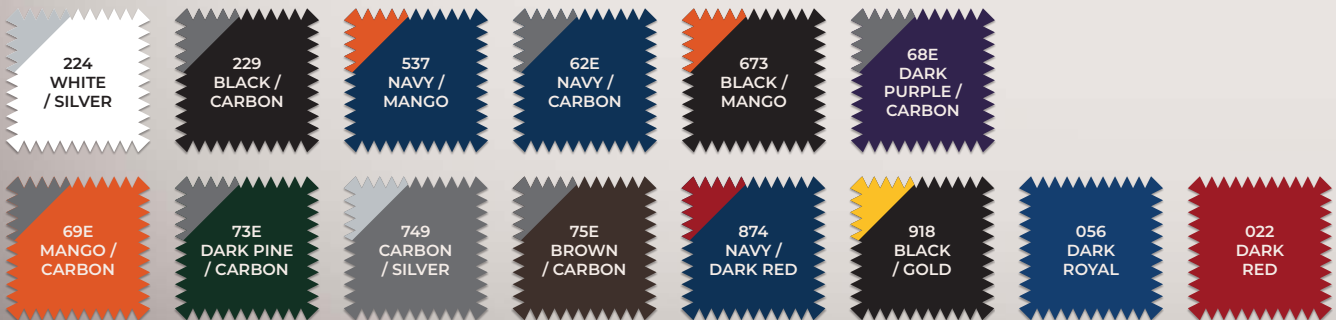
*Blank Price:*

\$53.00

537  
Navy / Mango

*Price Embroidered with Logo:*

\$60.00



# LINKS 2 GOLF JACKET W 105716

Don't be fooled by this jacket's name. Links can be worn on and off the golf course. The inner lining is a traditional micro polar fleece, which will keep you warm. The outer layer is a waterproof membrane that protects you from the elements.

- 100% polyester fleece bonded with waterproof membrane (280gsm)
- On-seam welt pockets
- Zipper guard with wind flap at interior zipper
- Antigua 'A' at back of neck

**XS-2XL**



87H  
Skyscraper

Blank Price:\$58.00

Price Embroidered with Logo:\$65.00



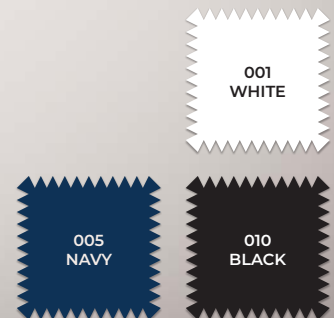
010  
Black

# CONTINUAL JACKET W 105666

Style and comfort define this jacket. Sleek lines and a blade collar elevate the styling and our poly span provides the comfort. Features also include moisture-wicking and four-way stretch.

- 88% polyester/12% spandex brushed fabric (230gsm)
- Blade collar
- On-seam zip hand pockets
- Antigua 'A' on right sleeve

**XS-2XL**



Blank Price:\$56.00

Price Embroidered with Logo:\$63.00



# EVEN PAR JACKET W

104760

Don't be afraid to step things up in our Even Par jacket. Made from 100% polyester twill, this jacket makes a stylish statement. Yet, its classic and timeless design will never go out of style.

- 100% polyester twill (175gsm)
- Inner liner
- Double layer collar
- Flat patch chest pockets
- In-seam hand pockets
- Antigua 'A' at right cuff

**XS-2XL**



005  
Navy

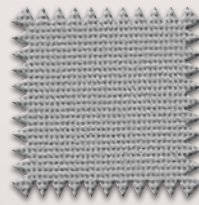


Blank Price:\$60.00

Price Embroidered with Logo:\$67.00



87H  
Skyscraper



# REGARD JACKET W

105680

Part of our new technical, textured poly-knit fabric products, this jacket is destined to be a new classic. It features an inner liner, a chest pocket and on-seam side pockets.

- 100% textured polyester (190gsm)
- Inner liner
- Right chest welt pocket with hidden zipper
- On-seam pockets
- Antigua 'A' at right cuff

**XS-2XL**



Blank Price:\$60.00

Price Embroidered with Logo:\$67.00

# UNIVERSE JACKET W

105383

The Universe jacket is our take on the quilted "Puffer". Style and warmth is its calling card. We are using 100% nylon taslan with 105gsm poly fill as our base for this classic jacket.

- 100% polyester nylon taslan 228 T with 105gsm polyester fill
- Quilting with polyester fill
- Inner liner
- On-seam hand pockets
- Antigua 'A' at right bottom hem

**XS-2XL**



*Blank Price:*

\$72.00

005  
Navy

*Price Embroidered with Logo:*

\$79.00









# fleece

THE WOMEN'S COLLECTION





# VICTORY CREW W

104726

This is a great everyday, traditional crewneck fleece top. Made with heavyweight cotton polyester brushed back fleece, it is incredibly comfortable and warm.

- 52% cotton/48% polyester brushed back fleece (330gsm)
- Forward roll shoulder seam
- 2x2 rib detail at collar, cuff and hem
- Antigua 'A' on right cuff

**S-2XL**



*Blank Price:*

\$44.00

*Price Embroidered with Logo:*

\$51.00



# VICTORY PO HOOD W

104727

Everyone needs a heavyweight cotton fleece hoodie...and this is it. Made with polyester brushed back fleece, this hoodie is the perfect hoodie for living your best life.

- 52% cotton/ 48% polyester brushed back fleece (330gsm)
- Contrast drawcords and hoodliner
- Kangaroo pocket
- Rib cuff and hem
- Antigua 'A' at top of hood

**S-2XL**



**Blank Price:**

**\$47.50**

021  
New Gold

**Price Embroidered with Logo:**

**\$54.50**





# VICTORY FZ HOOD W

101185

Our full-zip, heavyweight fleece hoodie is a great layering piece for whatever the day holds. Hanging around your house, watching your favorite team play while out with your friends or running errands — this is the perfect piece.

- 52% cotton/  
48% polyester  
brushed back  
fleece (330gsm)
- Full-zip with  
raglan sleeves
- Contrast drawcords  
and hoodliner
- Kangaroo pocket
- Rib cuff and hem
- Antigua 'A' at top  
of hood

S-2XL



069  
CABERNET

Blank Price:

\$49.50

Price Embroidered with Logo:

\$56.50



# VICTORY 1/4 ZIP PULLOVER

105484

Looking for a little more stylish fleece piece? Our heavyweight 1/4 zip pullover is for you. Also made with our cotton polyester brushed back fleece, it is great for running around town.

- 52% cotton/48% polyester brushed back fleece (330gsm)
- Covered zipper detail
- Forward roll shoulder seam
- 2x2 rib detail at cuff and hem
- Antigua 'A' on right cuff

**XS-2XL**



*Blank Price:*

\$47.50

010  
Black

*Price Embroidered with Logo:*

\$54.50





# JUSTICE PO HOOD W 105376

This hoodie is part of an incredible new fabric collection. The fabric is ridiculously soft. It is made with brushed heather and just may be the most comfortable hoodie you have ever worn.

- 91% polyester/9% spandex signature buffed fleece (260gsm)
- 3-piece clean finish hood
- braided drawcords with rubberized tips
- Kangaroo pocket
- Antigua 'A' on right cuff

**XS-2XL**

*Blank Price:* \$54.00

*Price Embroidered with Logo:* \$61.00



243  
DARK  
PURPLE  
HEATHER



718  
COLUMBIA  
BLUE HEATHER

# CRUSH 1/4 ZIP PULLOVER W 105377

Made with our new, ridiculously soft brushed heather fabric, this 1/4 zip pullover will provide you with a layer of warmth on and off the course.

- 91% polyester/9% spandex signature buffed fleece (260gsm)
- 8-inch zipper with covered placket dyed to match tipped plastic zipper pull
- Self-fabric cuff and hem
- Antigua 'A' on right cuff

**XS-2XL**

*Blank Price:* \$52.00

*Price Embroidered with Logo:* \$59.00



# SEEKER FZ HOOD W

105374

Our softest fabric provides both comfort and style. You will be the envy of all your friends when you wear this out.

- 91% polyester/9% spandex signature buffed fleece (260gsm)
- Braided drawcords with rubberized tips
- Kangaroo pocket
- Antigua 'A' on right cuff

**XS-2XL**



**Blank Price:**

**\$56.00**

011  
Grey Heather

**Price Embroidered with Logo:**

**\$63.00**











***bottoms***

THE WOMEN'S COLLECTION



# CHIP SKORT W

104762

Our Chip skort provides fit and flare. Made from a blend of polyester and spandex, this skort provides plenty of stretch for any activity.

- 92% polyester/  
8% spandex  
(170 gsm body/  
125 gsm liner)
- Signature poly sheen fabric
- Forward seam detail shape for fit + flare
- Built-in short
- Antigua 'A' at right bottom hem

**XS-2XL**

**Outseam Length:**

**XS – 16.5"**

**S – 16.75"**

**M – 17"**

**L – 17.25"**

**XL – 17.5"**

**2XL – 17.75"**



005  
Navy

**Blank Price:**

**\$48.00**



# VICTORY SWEATPANT W

105536

There is nothing better than a great, heavyweight pair of sweatpants. Our Victory sweatpant is made with cotton and polyester brushed back fleece, which make these really, really comfortable.

- 52% cotton/  
48% polyester brushed back fleece (330gsm)
- Wide leg open bottom
- Elastic waistband with internal drawcord
- Side seam pockets
- Antigua 'A' on back right hip

***XS-2XL***

***Inseam 30" for All Sizes***

011  
Grey Heather

***Blank Price:***

***\$48.00***





A photograph of an outdoor patio area in a desert setting. In the foreground, there is a wicker sofa with beige and orange cushions, and a wooden coffee table. In the middle ground, there are several large, light-colored concrete planters containing various plants, including a large Saguaro cactus and a flowering shrub. The background features a green lawn, more cacti, and a rugged, rocky mountain range under a clear sky.

# *Matchables*







# LEGACY POLOS



104271 – Men's

005 NAVY



104275 – Women's

344 COLUMBIA BLUE

Blank Price:

\$31.50

Price Embroidered with Logo:

\$38.50



# TRIBUTE POLOS



104197 – Men's

032 MANGO



104198 – Women's

032 MANGO

Blank Price:

\$34.50

Price Embroidered with Logo:

\$41.50





# REPROCESS POLOS



105588 – Men's

005 NAVY



105662 – Women's

010 BLACK

Blank Price:

\$36.00

Price Embroidered with Logo:

\$43.00



# PAR 3, MATTER, & RECAP POLOS



104829 – Men's  
33X HARBOR HEATHER



105239 – Women's  
91Y PASTEL LILAC HEATHER



105350 – Women's  
171 SKYSCRAPER HEATHER

Blank Price:  
\$39.50

Price Embroidered with Logo:  
\$46.50

Blank Price:  
\$36.00

Price Embroidered  
with Logo:  
\$43.00



A41  
QUIET  
HARBOR  
HEATHER



171  
SKYSCRAPER  
HEATHER



33X  
HARBOR  
HEATHER



041  
NAVY  
HEATHER



91Y  
PASTEL  
LILAC  
HEATHER



094  
BLACK  
HEATHER



718  
COLUMBIA  
BLUE  
HEATHER



732  
DARK  
ROYAL  
HEATHER



# ERA POLOS



105615 – Men's  
009 DARK PURPLE



105694 – Women's  
022 DARK RED

Blank Price:  
\$39.50

Price Embroidered with Logo:  
\$46.50



# LAYOUT POLOS



105131 – Men's  
011 GREY HEATHER

Blank Price:  
\$41.00

Price Embroidered  
with Logo:  
\$48.00



105717 – Women's  
055 DARK RED HEATHER

Blank Price:  
\$36.00

Price Embroidered  
with Logo:  
\$43.00



105719 – Women's  
732 DARK ROYAL HEATHER

Blank Price:  
\$.. .00

Price Embroidered  
with Logo:  
\$48.00





# TUNNEL POLOS



105281 – Men's

658 NAVY MULTI



105678 – Women's

993 COLUMBIA BLUE MULTI

Blank Price:

\$39.00

Price Embroidered with Logo:

\$46.00



# RINGS POLOS



105698 – Men's  
A46 WHITE / QUIET HARBOR



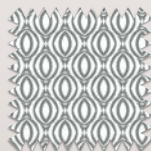
105712 – Women's  
31W WHITE / SKYSCRAPER

Blank Price:  
\$44.00

Price Embroidered with Logo:  
\$51.00



A46  
WHITE /  
QUIET HARBOR



31W  
WHITE /  
SKYSCRAPER



222  
WHITE /  
BLACK



223  
WHITE /  
NAVY



# TRIBUTE 1/4 ZIP PULLOVERS



104644 – Men's  
035 CELTIC GREEN



104682 – Women's  
344 COLUMBIA BLUE

Blank Price:  
\$41.00

Price Embroidered with Logo:  
\$48.00



# REPROCESS 1/4 ZIP PULLOVERS



105587 – Men's  
87H SKYSCRAPER



105663 – Women's  
056 DARK ROYAL

Blank Price:  
\$42.00

Price Embroidered with Logo:  
\$49.00



001  
WHITE



005  
NAVY



07M  
BURNT  
OLIVE



010  
BLACK



022  
DARK  
RED



056  
DARK  
ROYAL



87H  
SKYSCRAPER



# HUNK & MENTOR 1/4 ZIP PULLOVERS & DAYBREAK 1/4 ZIP HOOD



104958 – Men's

732 DARK ROYAL HEATHER

Blank Price:

\$44.00

Price Embroidered  
with Logo:

\$51.00



105240 – Women's

041 NAVY HEATHER

Blank Price:

\$44.00

Price Embroidered  
with Logo:

\$51.00



105668

094 BLACK HEATHER

Blank Price:

\$48.00

Price Embroidered  
with Logo:

\$55.00



# INTENT 1/4 ZIP PULLOVERS



105640 – Men's

022 DARK RED



105695 – Women's

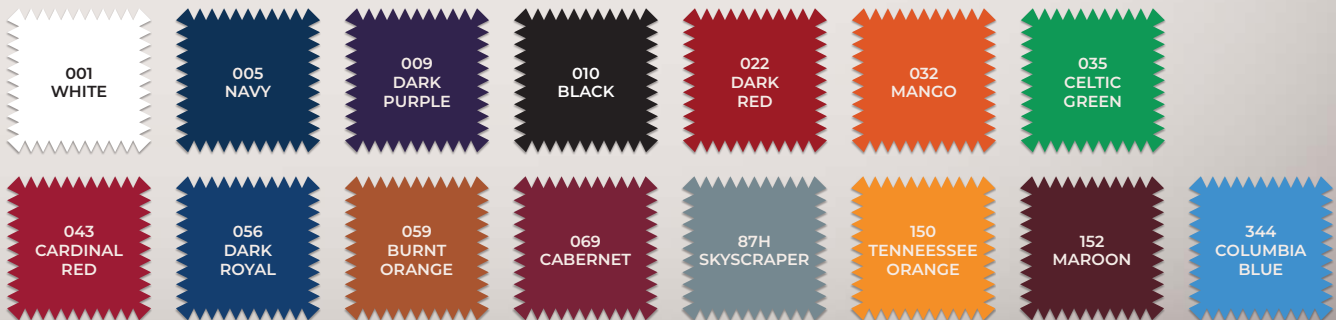
009 DARK PURPLE

Blank Price:

\$44.00

Price Embroidered with Logo:

\$51.00





# BRIGHT 1/4 ZIP PULLOVERS & TIDY 1/4 ZIP HOOD



105155 – Men's

732 DARK ROYAL HEATHER



105673 – Women's

094 BLACK HEATHER



105167 – Men's

041 NAVY HEATHER

Blank Price:  
\$45.00

Blank Price:  
\$45.00

Blank Price:  
\$48.00

Price Embroidered  
with Logo:  
\$52.00

Price Embroidered  
with Logo:  
\$52.00

Price Embroidered  
with Logo:  
\$55.00



# GENERATION 1/4 ZIP PULLOVER & JACKET



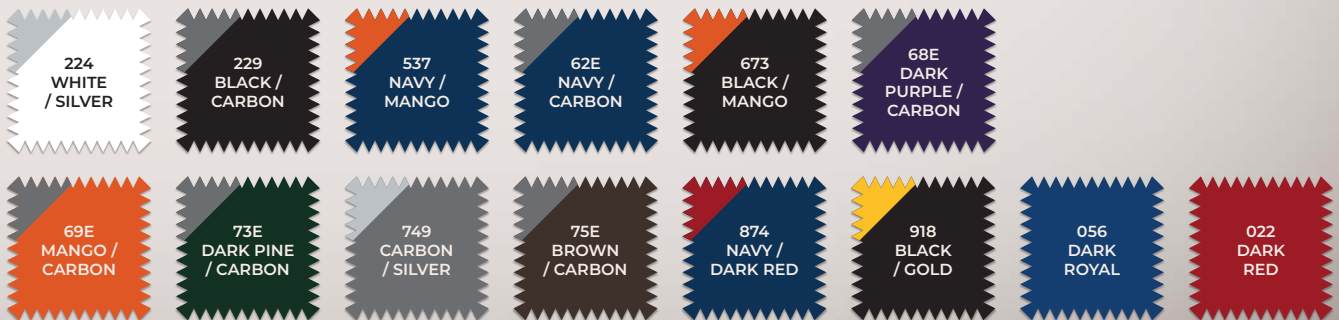
104366 – Men's  
68E DARK PURPLE / CARBON



104367 – Women's  
537 NAVY / MANGO

Blank Price:  
\$53.00

Price Embroidered with Logo:  
\$60.00





CERTAIN 1/4 ZIP PULLOVER  
& HOLD UP JACKET



105432 – Men's  
011 GREY HEATHER

Blank Price:  
\$65.00

Price Embroidered  
with Logo:  
\$72.00



105431 – Men's  
011 GREY HEATHER

Blank Price:  
\$69.00

Price Embroidered  
with Logo:  
\$76.00



# FORTUNE 1/4 ZIP PULLOVERS & VEST



101184 – Men's  
070 SMOKE HEATHER



101306 – Women's  
77H OATMEAL HEATHER



105632 – Men's  
77H OATMEAL HEATHER

Blank Price:  
\$69.00

Price Embroidered with Logo:  
\$76.00

Blank Price:  
\$56.00

Price Embroidered  
with Logo:  
\$63.00





# PIVOT & EVEN PAR JACKETS



104775 – Men's

010 BLACK



104760 – Women's

005 NAVY

Blank Price:

\$60.00

Price Embroidered with Logo:

\$67.00



005  
NAVY



010  
BLACK



87H  
SKYSCRAPER

# REGARD JACKETS & VEST



105605 – Men's  
005 NAVY



105680 – Women's  
87H SKYSCRAPER



105606 – Men's  
010 BLACK

Blank Price:  
\$60.00

Price Embroidered with Logo:  
\$67.00

Blank Price:  
\$52.00

Price Embroidered  
with Logo:  
\$59.00





# LINKS 2 JACKETS



105715 – Men's

056 DARK ROYAL



105716 – Women's

87H SKYSCRAPER

Blank Price:

\$58.00

Price Embroidered with Logo:

\$65.00



DAILY FUSED JACKET, FIGURE 1/4 ZIP  
PULLOVER, & NOSTALGIC VEST



105472 – Men's  
87H SKYSCRAPER

Blank Price:  
\$76.00

Price Embroidered  
with Logo:  
\$83.00



105408 – Women's  
005 NAVY

Blank Price:  
\$72.00

Price Embroidered  
with Logo:  
\$79.00



105405 – Women's  
010 BLACK

Blank Price:  
\$68.00

Price Embroidered  
with Logo:  
\$75.00



005  
NAVY



010  
BLACK



87H  
SKYSCRAPER



# SWELTER & UNIVERSE JACKETS & EXPERIENCE VEST



105718 – Men's

010 BLACK

Blank Price:

\$76.00

Price Embroidered  
with Logo:

\$83.00



105383 – Women's

005 NAVY

Blank Price:

\$72.00

Price Embroidered  
with Logo:

\$79.00



105384 – Women's

022 DARK RED

Blank Price:

\$64.00

Price Embroidered  
with Logo:

\$71.00



001  
WHITE



005  
NAVY



010  
BLACK



022  
DARK  
RED



056  
DARK  
ROYAL



87H  
SKYSCRAPER



201  
BLACK  
MULTI

# SUBTLE & CRUSH 1/4 ZIP PULLOVERS



105435 – Men's  
094 BLACK HEATHER

Blank Price:  
\$52.00

Price Embroidered with  
Logo:  
\$59.00



105377 – Women's  
718 COLUMBIA BLUE HEATHER

Blank Price:  
\$52.00

Price Embroidered with  
Logo:  
\$59.00





# CLOUD & JUSTICE PO HOODS



105650 – Men's

732 DARK ROYAL HEATHER



105376 – Women's

243 DARK PURPLE HEATHER

Blank Price:

\$54.00

Price Embroidered with Logo:

\$61.00



# EFFORTLESS & SEEKER FZ HOODS



105651 – Men's

A39 BURNT OLIVE HEATHER



105374 – Women's

011 GREY HEATHER

Blank Price:

\$56.00

Price Embroidered with Logo:

\$63.00



A39  
BURNT  
OLIVE  
HEATHER



011  
GREY  
HEATHER



041  
NAVY  
HEATHER



055  
DARK  
RED  
HEATHER



094  
BLACK  
HEATHER



243  
DARK  
PURPLE  
HEATHER



716  
DARK PINE  
HEATHER



718  
COLUMBIA  
BLUE  
HEATHER



732  
DARK  
ROYAL  
HEATHER



733  
MANGO  
HEATHER



# VICTORY CREWS



105482 – Men's

056 DARK ROYAL



104726 – Women's

080 OLIVE

Blank Price:  
\$44.00

Price Embroidered with Logo:  
\$51.00



# VICTORY PO HOODS



101182 – Men's  
069 CABERNET



104727 – Women's  
021 NEW GOLD

Blank Price:  
\$47.50

Price Embroidered with Logo:  
\$54.50





# VICTORY 1/4 ZIP PULLOVERS



105483 – Men's

011 GREY HEATHER

Blank Price:

\$47.50

Price Embroidered with Logo:

\$54.50



105484 – Women's

010 BLACK

Blank Price:

\$47.50

Price Embroidered with Logo:

\$54.50



# VICTORY FZ HOODS



101183 – Men's

021 NEW GOLD



101185 – Women's

069 CABERNET

Blank Price:

\$49.50

Price Embroidered with Logo:

\$56.50





# VICTORY SWEATPANTS



105557 – Men's

010 BLACK



105536 – Women's

011 GREY HEATHER

Blank Price:  
\$48.00



# SIZE CHARTS

## MEN'S

### Men's Tops

| US Size           | 34 – 36<br>S | 38 – 40<br>M | 42 – 44<br>L | 46 – 48<br>XL | 50 – 52<br>2XL | 54 – 56<br>3XL | 58 – 60<br>4XL | 62 – 64<br>5XL |
|-------------------|--------------|--------------|--------------|---------------|----------------|----------------|----------------|----------------|
| <b>Neck (in)</b>  | 15 – 15.5    | 16 – 16.5    | 17 – 17.5    | 18 – 18.5     | 19 – 19.5      | 20 – 21        | 21.5 – 22      | 22.5 – 23.5    |
| <b>Chest (in)</b> | 34 – 36      | 36 – 40      | 40 – 44      | 44 – 48       | 48 – 52        | 52 – 56        | 56 – 60        | 60 – 64        |
| <b>Waist (in)</b> | 28 – 30      | 30 – 34.5    | 34.5 – 38.5  | 38.5 – 43.5   | 43.5 – 48.5    | 48.5 – 54      | 54 – 58        | 58 – 62        |
| <b>Hip (in)</b>   | 33.5 – 35.5  | 37.5 – 39.5  | 39.5 – 44    | 44 – 47       | 47 – 50        | 50 – 53.5      | 53.5 – 57.5    | 57.5 – 61.5    |

*The size chart is intended for reference only. Sizes may vary between styles.*

### Men's Bottoms

| US Size           | S           | M           | L           | XL          | 2XL         | 3XL       | 4XL         | 5XL         |
|-------------------|-------------|-------------|-------------|-------------|-------------|-----------|-------------|-------------|
| <b>Waist (in)</b> | 28 – 30     | 30 – 34.5   | 34.5 – 38.5 | 38.5 – 43.5 | 43.5 – 48.5 | 48.5 – 54 | 54 – 58     | 58 – 62     |
| <b>Hip (in)</b>   | 33.5 – 35.5 | 37.5 – 39.5 | 39.5 – 44   | 44 – 47     | 47 – 50     | 50 – 53.5 | 53.5 – 57.5 | 57.5 – 61.5 |

*The size chart is intended for reference only. Sizes may vary between styles.*

Body measurements are given in inches. If you're on the border between two sizes, order the smaller size for a tighter fit or the larger size for a looser fit. If your measurements for chest and waist correspond to two different suggested sizes, order the size indicated by your chest measurement.

Size charts define the measurement of the body and not the garment.



# WOMEN'S

## Women's Tops/Bottoms

| US Size           | 0 - 2<br>XS | 4 - 6<br>S  | 8 - 10<br>M | 12 - 14<br>L | 16 - 18<br>XL | 20<br>2XL | 3XL       | 4XL |
|-------------------|-------------|-------------|-------------|--------------|---------------|-----------|-----------|-----|
| <b>Chest (in)</b> | 31 - 33     | 33 - 35.5   | 35.5 - 38   | 38 - 41      | 41 - 44       | 44 - 47.5 | 47.5 - 51 | NA  |
| <b>Waist (in)</b> | 25 - 27     | 27 - 29     | 29 - 31.5   | 31.5 - 34.5  | 34.5 - 38     | 38 - 41.5 | 41.5 - 45 | NA  |
| <b>Hip (in)</b>   | 34 - 36     | 35.5 - 38.5 | 38.5 - 40.5 | 40.5 - 43.5  | 43.5 - 46.5   | 46.5 - 50 | 50 - 53.5 | NA  |

*The size chart is intended for reference only. Sizes may vary between styles.*

## Women's Bottoms

| US Size           | 0 - 2<br>XS | 4 - 6<br>S  | 8 - 10<br>M | 12 - 14 L   | 16 - 18 XL  | 20<br>2XL | 3XL       | 4XL |
|-------------------|-------------|-------------|-------------|-------------|-------------|-----------|-----------|-----|
| <b>Waist (in)</b> | 25 - 27     | 27 - 29     | 29 - 31.5   | 31.5 - 34.5 | 34.5 - 38   | 38 - 41.5 | 41.5 - 45 | NA  |
| <b>Hip (in)</b>   | 34 - 36     | 35.5 - 38.5 | 38.5 - 40.5 | 40.5 - 43.5 | 43.5 - 46.5 | 46.5 - 50 | 50 - 53.5 | NA  |

*The size chart is intended for reference only. Sizes may vary between styles.*

Body measurements are given in inches. If you're on the border between two sizes, order the smaller size for a tighter fit or the larger size for a looser fit. If your measurements for chest and waist correspond to two different suggested sizes, order the size indicated by your chest measurement.

Size charts define the measurement of the body and not the garment.